

NEW

ELECTRIC ACTUATOR SA - 03



The SA-Series Actuator has been designed for the automation of 90-degree rotating equipment. The Actuator is well suited applications requiring torque 3Kg.m (30Nm). Typical applications are ball valves, butterfly valves and dampers.

PERFORMANCE

MODEL	MAIN POWER	OUTPUT TORQUE		OPERATING TIME(90°)	RATED CURRENT				DUTY CYCLE		NUMBER OF HANDLE TURNS	Weight
		Kg.m	N.m		1 PHASE(AC)			DC	S2(min)	S4(%)		
					24V	110V	220V	24V				
SA-03	AC 24V ± 10%	3	30	8 sec	(Will Update)	0.8	0.8	0.8	15	50	6	1.5
	DC 24V ± 10%											
	AC 110V ± 10%											
	AC 230V ± 10%											

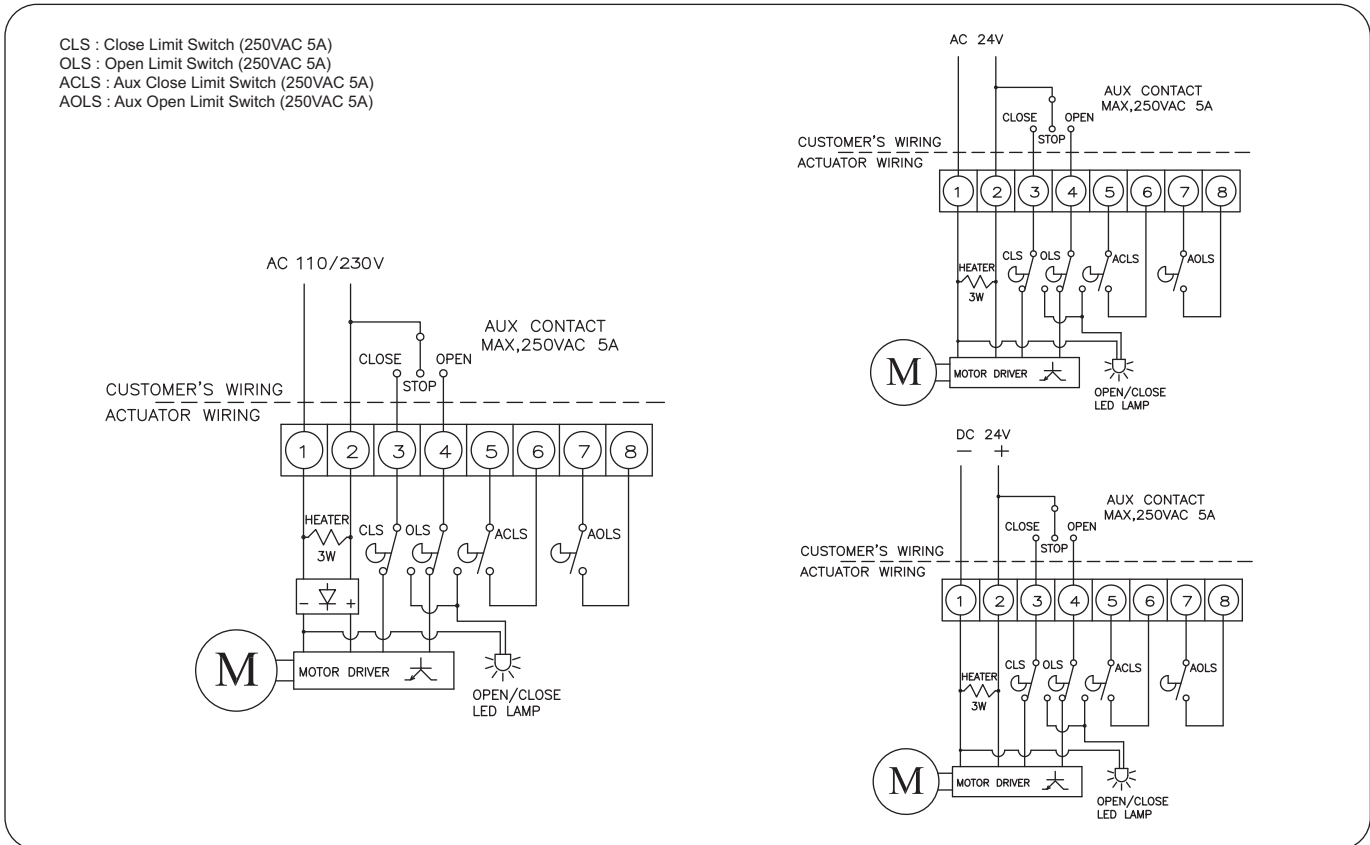
OPTION

		SA-03	SA-03L
P. I. U	Potentiometer Unit		●
C. P. T	Current Position Transmitter Output DC 4-20mA		●
P. C. U	Proportional Control Unit Input : DC 4-20mA, 2-10V, 0-5V, 0-10V, 1-5V Ourput : DC 4-20mA		●

STANDARD SPECIFICATION

Indicator	Dome type (LED light inside)	Enclosure	Weatherproof enclosure IP67 Nema 4 and 6
Ambient temperature	-20°C to 70°C	Power supply	AC 110/230V 1PH ±10% 50/60Hz, AC24V, DC24
Limit switches	2 Open/Close + Dry contact 2 Open/Close	Travel angle	90°C ± 5° (Extension : upto 270°)
Manual operation	By L-wrench (6mm hexagon)	Self locking	Provided by means of magnetic in motor
Space heater	2 x 1.5W	Conduit entries	1-PF1/2" (Option : 1-M20x1.5, 1-NPT1/2") Option: 2-PF1/2", 2-M20x1.5, 2-NPT1/2"
Lubrication	Grease moly (EP type)	Consist of Materials	Aluminium alloy
Surface treatment	Anodizing	External coating	Polyester (TGIC-free)

STANDARD WIRING



DIMENSION

