

ELECTRIC ACTUATOR

SA - 05X, 09X (EXP Type)

- Flameproof Enclosure
- Engineered to be lightweight and compact for greater versatility.
- The unique housing design allows various options to be installed without the additional cost of an external enclosure.
- To help protect the components and extend the actuator's life, a 5-watt anti-condensation heater is included as standard.
- Included with the end of travel motor switches are two additional dry-contacts for auxiliary indication.
- A thermal protector is provided to protect the motor from over heating.
- The worm gear drive eliminates the possibility of back drive and the need for motor brakes.
- Designed for mounting in any orientation.
- In case of a power loss, the manual over-ride is provided for positioning the valve.
- 3 ISO mounting pads are provided for greater flexibility.



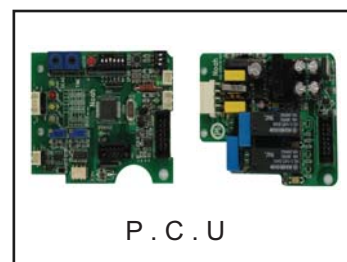
SA-05X , 09X

PERFORMANCE

MODEL	OUTPUT TORQUE		OPERATING TIME(90°)		MOTOR CLASS (E)	RATED CURRENT				DUTY CYCLE	NUMBER OF HANDLE TURNS	WEIGHT
	Kg.m	N.m	60Hz	50Hz		W	1 PHASE (AC)					
					24V		110V	220V	24V	S2 (%)	Kg	
SA-05X	5	50	14	17	6	1.8	0.35	0.23	1.8	75	6	5
SA-09X	9	90	35	42	6	1.8	0.19	0.19	1.8	75	6	5

OPTION

		SA-05X	SA-09X
P . I . U	Potentiometer Unit (1K-Ohm)	●	●
C . P . T	Current Position Transmitter Output DC 4-20mA	●	●
P . C . U	Proportional Control Unit Input : DC 4-20mA, 2-10V, 0-5V, 0-10V, 1-5V Ourput : DC 4-20mA	●	●

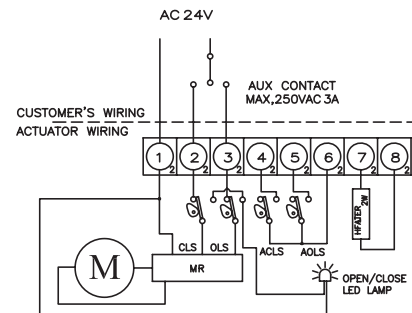
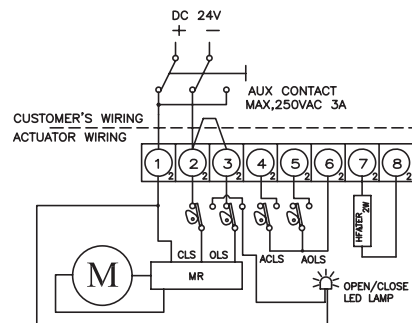
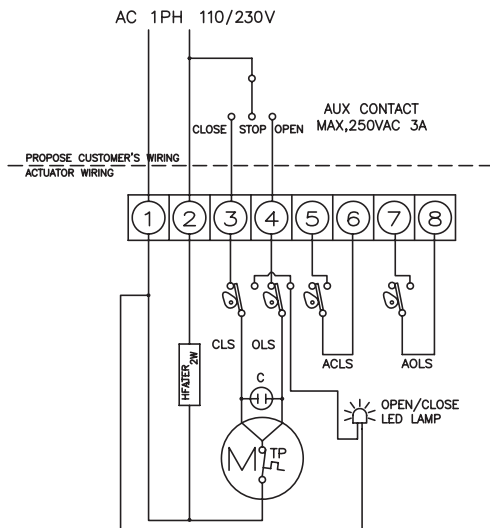


STANDARD SPECIFICATION

Indicator	Flat type	Enclosure	Weatherproof enclosure IP67 Nema 4 and 6
Ambient temperature	-20°C to 70°C	Power supply	AC 110/230V 1PH ±10% 50/60Hz, DC24(AC24V)
Limit switches	2 Open/Close + Dry contact 2 Open/Close	Travel angle	90°C ± 5° (extension : upto 270°)
Manual operation	By L-wrench (6mm hexagon)	Self locking	Provided by means of worm gearing
Space heater	5W (110/230VAC, 24VDC)	Conduit entries	Two PF1/2" (Option : PG13.5, NPT1/2")
Lubrication	Grease moly (EP type)	Consist of Materials	Steel, Aluminium alloy, bronze
Surface treatment	Anodizing	External coating	Polyester (TGIC-free)

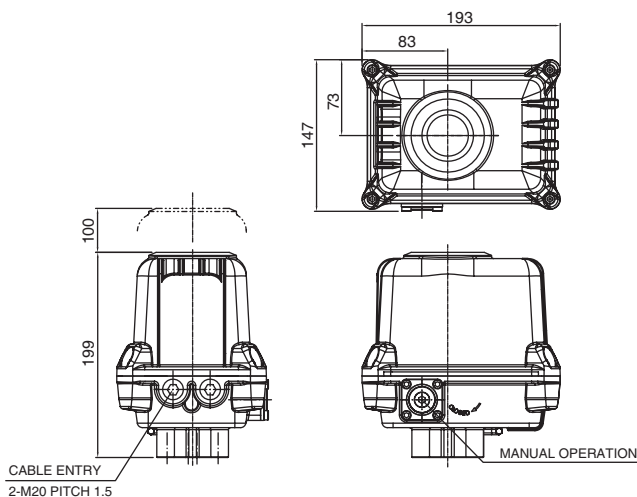
STANDARD WIRING

CLS : Close Limit Switch (250VAC 3A)
 OLS : Open Limit Switch (250VAC 3A)
 ACLS : Aux Close Limit Switch (250VAC 3A)
 AOLS : Aux Open Limit Switch (250VAC 3A)
 TP : Thermal Protector (250VAC 3A)
 RM : Motor Regulation



DIMENSION

SA-05X , 09X



BASE (OPTION)

